

Peer Support South East Ontario (PSSEO) Board of Directors 2016/17



Ed Bentley
President and
Chairman of the Board

Ed Bentley retired in 2014 following 41 years as a Minister of Religion for the United Church of Canada. Ed joined the Board in 2006 and was appointed President and Chair in September 2011. Ed has served on the Board of Mental Health Clinic at St. Martha's Hospital in Antigonish, Nova Scotia and is currently a member of the Hastings Prince Edward Coordinating Committee for Adult Mental Health Services. Ed is a past Chair of Hastings County Children's Aid Society; member of Quinte Health Care's Bioethics Committee, the Hastings Prince Edward Task Group on Poverty and the Belleville Mayor's Task Group on Hunger.

Currently Ed is a member of the Strategic Alliance for Addiction and Mental Health Services in South East Ontario, the Rights Committee of Community Living Belleville and area, the Community Advisory Board for Federal Government Homelessness Partnering Strategy Grants in Belleville, the Spiritual Care Committee of Quinte Health Care and the Steering Committee of the Hastings Prince Edward Poverty Roundtable.

Awards and Special Recognition include honorary membership in Hastings Children's Aid Society; Miller Award for Outstanding Contributions to Inter-faith Relations; Community Living Belleville and Area Volunteer of the Year Award and 418 Wing RCAF Association Humanitarian Award.



Carol Wannamaker
Vice President

Carol, is a Registered Nurse who graduated from the Belleville General Hospital Nursing School, and following Post graduate Studies at the Allen Memorial Institute in Montreal, worked in a variety of psychiatric clinical settings until 1999 when she joined the management team of Quinte Health Care as Director of Complex Continuing Care, Rehab and Mental Health until her retirement in 2008. During that time she led the establishment of a Consumer Advisory Committee for the Schedule One hospital, a group of former patients who were enabled to make important changes to the setting and routines in order to improve the patient experience in hospital.

Carol has been a Board member since September 2008, holding the position of Treasurer until September 2011 at which time she was appointed Vice President, a position she continues to hold for 2016/17. Formerly a Board member of Children's Mental Health Hastings Prince Edward and Providence Care, she currently sits on the Board of United Way Quinte.

Carol joined PSSEO's Board due to her interest in the provision of evidenced based Addiction and Mental Health services, the importance of honouring the perspective of the individuals, and the unique benefits of Peer Support in their journey to Recovery.



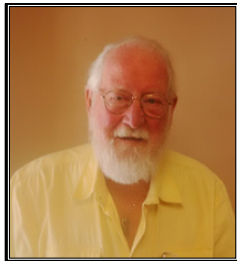
Joshua Decaire
Director and Lead for
Finance

Joshua graduated from the University in Ottawa in 2013 where he earned an Honours Bachelor of Social Sciences Degree with Specialization in Criminology and Minor in Psychology. Previously employed with Queen's University in the Centre for Health Services and Policy Research under Doctors Heather Stuart and Terry Krupa in a mental health research role, Joshua currently is employed with Professional Investments, a financial services company.

While at the University of Ottawa, his studies focussed on problems relating to mental health and addictions issues, as well as the stigma surround those issues. Joshua felt that being able to join an organization working to address those issues at a community level was a tremendous opportunity.

Joshua joined the Board of PSSEO in September 2014 because ***“the idea of an organization doing such great work, with a relatively limited budget and outside of a clinical model”*** was extremely appealing to him.

Being a relatively recent university graduate who also worked within the mental health field, Joshua feels that he can contribute a fresh perspective to the issues the organization faces. Joshua accepted the Board position of Lead for Finance for the 2016/17 fiscal year.

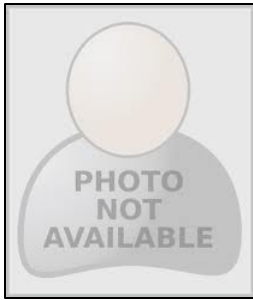


Ralph Hall

Ralph Hall was first appointed to the Board in November 2003. Following a brief absence in 2008, he returned to the Board in 2009. Ralph has held numerous positions on the Board including President and Vice President and was elected Treasurer in September 2011, a position he held until September 8, 2016.

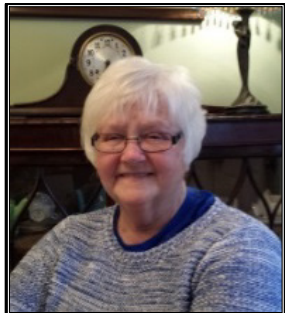
Retired from Ontario Hydro where he worked for 38 years operating power stations and as District Operating Supervisor, Ralph also served as Counsellor in Wellington for three years. In addition to PSSEO, he has served on the Boards of: Etobicoke Safety Commission, Grotto Cerebral Palsy Foundation, V.O.N. Foundation, Prince Edward Community Care for Seniors, United Church, ESGA Foundation and Prince Edward Conservation.

Ralph joined the Board as he was interested in the work and objectives of PSSEO.



Mabel McLellan
Secretary

No bio available

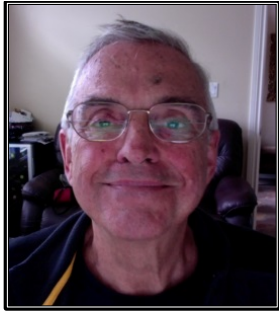


Sue MacLatchie
Director and Lead for
Nominations

Sue, a resident of South Frontenac Township for the past 10 years, retired from Somerset West Community Health Centre in downtown Ottawa in 2005 where she worked for 15 years as a Community Developer. As part of her work with people living in poverty, Sue assisted in the development and growth of a City of Ottawa Poverty Awareness Committee.

Her experience working with people who lived with addictions and mental illness and her degrees including a BA in Sociology and Psychology, a Bachelor of Social Work (1992) and a Masters of Social Work (1995) are useful at the Board level by supporting decisions that are most helpful to participants.

Sue has been on the Board since April 2011 and was appointed Lead for Nominations in May 2011 responsible for identifying Board recruitment needs.



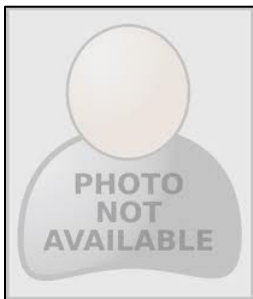
Terry Shepard
Director and
Lead for French Language
Services

Terry joined the Board in November 2012 and was appointed Lead for French Language Services in December filling the need for a Francophone Board member. Serving the Kingston region, Terry’s formal education was in mathematics while his informal education was primarily in computing. Terry has prepared and taught more than 25 courses in computing during his 23 years on the faculty at the RMC, all on the basis that the best way to learn something is to teach it.

In addition to his French language skills, Terry brings family experience with mental illness, a daughter with schizoaffective disorder and a mother and sister with bipolar illness. Terry’s family learned how to support their mentally ill family members over a period of more than 55 years.

Terry currently teaches the NAMI (National Alliance on Mental Illness) Family to Family course where there is considerable awareness of the possibility of outside peer support. His Board experience includes Gandalf Systems, the Cable Television Research Institute and the Kingston Chapter of the Institute for Electrical and Electronic Engineers.

He brings a wealth of community service experience including fundraising and canvassing for various charities including Crohn’s and Colitis Foundation of Canada, Heart and Stroke, Canadian Cancer Society and Canadian Diabetes. Terry is also a recipient of the Pioneer of Computing in Canada award from IBM.



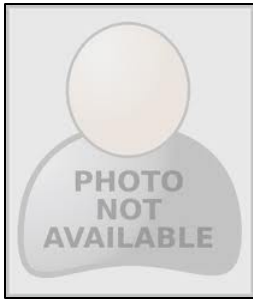
Terry Landry
Director and Lead
For Human Resources

Terry is currently the Regional Director – Specialty Mental Health Services at Providence Care, serving southeastern Ontario. His education includes a BSc. Occupational Therapy from Queen’s University; BSc. Kinesiology from University of New Brunswick; Adjunct Professor – School of Rehabilitation Therapy, Queens University and Faculty Trainer – Community Networks of Specialized Care Eastern Ontario.

Memberships include the Canadian Association of Occupational Therapists (CAOT); Member in good standing with the College of Occupational Therapists of Ontario (COTO), member of Queen’s School of Rehabilitation Academic Council 2008-12) as well as community service experience with the Toronto Brain Injury Association.

Terry is a strong supporter of Peer Support and brings value to the Board through advocacy and the ability to promote system change as a service provider in community mental health.



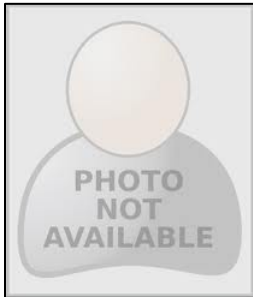


Pat Gray
Director and Lead for
Quality
Improvement

Pat has been a Board member since 2005 and is currently the Board's Lead for Quality Improvement. Pat brings to the Board extensive management skills acquired while holding the position of Manager of the Psychiatric Inpatient and Outpatient Services of Quinte Healthcare. Trained as a Registered Nurse, Pat specialized in Psychiatric Nursing and brings a wealth of knowledge of mental health issues and an absolute passion for the work.

Her Board experience includes Chairing the Board of Children's Mental Health Services serving Hastings Prince Edward.

Serving on PSSEO's Board satisfies her passion for being involved in the mental health field and the people we serve and provides her with a way of giving back to the community and ensuring the best care possible for people with addiction and mental health issues.



Chris Carey
Director

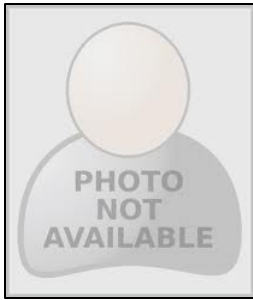
Chris joined the Board in June 2015 and brings with him extensive experience in the addictions and mental health field. Chris currently holds the position of Peer Specialist on the Assertive Community Treatment Team at Brockville General Hospital, which serves Leeds, Grenville, and South Lanark counties.

Owner and Moderator of Fireside Chat, an online ODSP Support Group, Chris helps connect members from across Ontario to services and resources in their home communities, responding to questions and concerns related to ODSP policy and practices. He facilitates discussion and debate online.

Chris is a former peer support worker in housing services at Addiction and Mental Health Services-KFLA. He is also the former chair of the agency's Client Advisory Committee, a position he held for several years.

Chris holds a Bachelor of Social Work from Dalhousie University. He completed Peer Support Training /Certification through OPDI and undergraduate study in psychology at Queen's





Jacqueline Smylie
Director

Jackie joined the Board in June 2015 bringing over 25 years' experience in the mental health field in the area of Quality Improvement and Accreditation. Jackie feels her skill set will help contribute and evaluate the current services being offered to PSSEO participants.

Jackie holds a Bachelor of Science degree from the University of Guelph and a graduate diploma in Health Services Management from the Canadian Healthcare Association.

In addition to her work experience as Manager of Quality Improvement and Accreditation in a provincial psychiatric hospital, she was also the staff liaison for a Patient Council that consisted of representatives from the various inpatient and outpatient programs at the hospital who were there to advocate for themselves and their peers. She also represented them at their Quality Council meeting on a monthly basis along with the Patient Council Coordinator to help address key issues or concerns.

Jackie was Chair of the Brockville Psychiatric Day Care Centre for several years and helped establish the first workplace daycare centre in Brockville to accommodate both 8 hour and 12 hour shift workers. Currently Jackie sits on the Board of Lanark, Leeds and Grenville Mental Health and Addictions and has been a member for 3 years.



Barbara Robinson
Director

Our newest Board member, Barbara, brings extensive experience in the field of mental health in diverse settings where she held roles in clinical care, education and leadership.

Currently, Barbara is an Advanced Practice Nurse, Clinical Nurse Specialist at Providence Care in Kingston within Forensic Mental Health Services.

Barbara joined the Board in May 2016 because ***"I was so deeply impressed with the ability of this organization to provide support that is positive, strength-based and inclusive."*** Her background includes many years of experience in the field of healthcare, advocacy and social justice initiatives. In 2013 she was the site co-lead for a research project at Providence Care in conjunction with Cheryl Forchuk and the Council of Academic Hospitals of Ontario that improved community reintegration processes via the Transitional Discharge model's components of peer and staff support. ***"I have seen firsthand the incredible value of intentional peer support and I am dedicated to support the availability of these recovery opportunities for all through PSSEO."***

In addition to her work experience, Barbara is a member of the Canadian Inter-professional Health Collaborative, Registered Nurses' Association of Ontario, Clinical Nurse Specialist Association of Ontario, Partners for Mental Health.
